



Cottor Plants (India) Pvt. Ltd.

Certified ISO 9001:2000 Company

COTTOR IS PROUD TO HAVE ENTERED INTO TECHNICAL COLLABORATION WITH



**CANTRELL
WORLDWIDE INC.**

2154 CHENAULT DRIVE • BUILDING A • CARROLLTON • TEXAS • 75006 USA
PHONE: +1-972-302-2557 FAX: +1-214-279-0855
Email: mmizer@cantrellworldwide.com WEB: www.cantrellworldwide.com

To Manufacture & Supply under licence
*Latest design, High capacity,
State of art modern technology,
Excellent performance,
Cotton Seed processing machinery & parts
For Vegetable Oil industries.*

NEW...

AIR DENSITY SEPARATOR

Simple to install and operate.

Counterflow air design allows complete separation of various product densities.

**Single 'Constant' CFM requirement
Variable speed roll feeder allows constant uniform feed rate.**

Air control damper can be set at the fan for ease of operation.

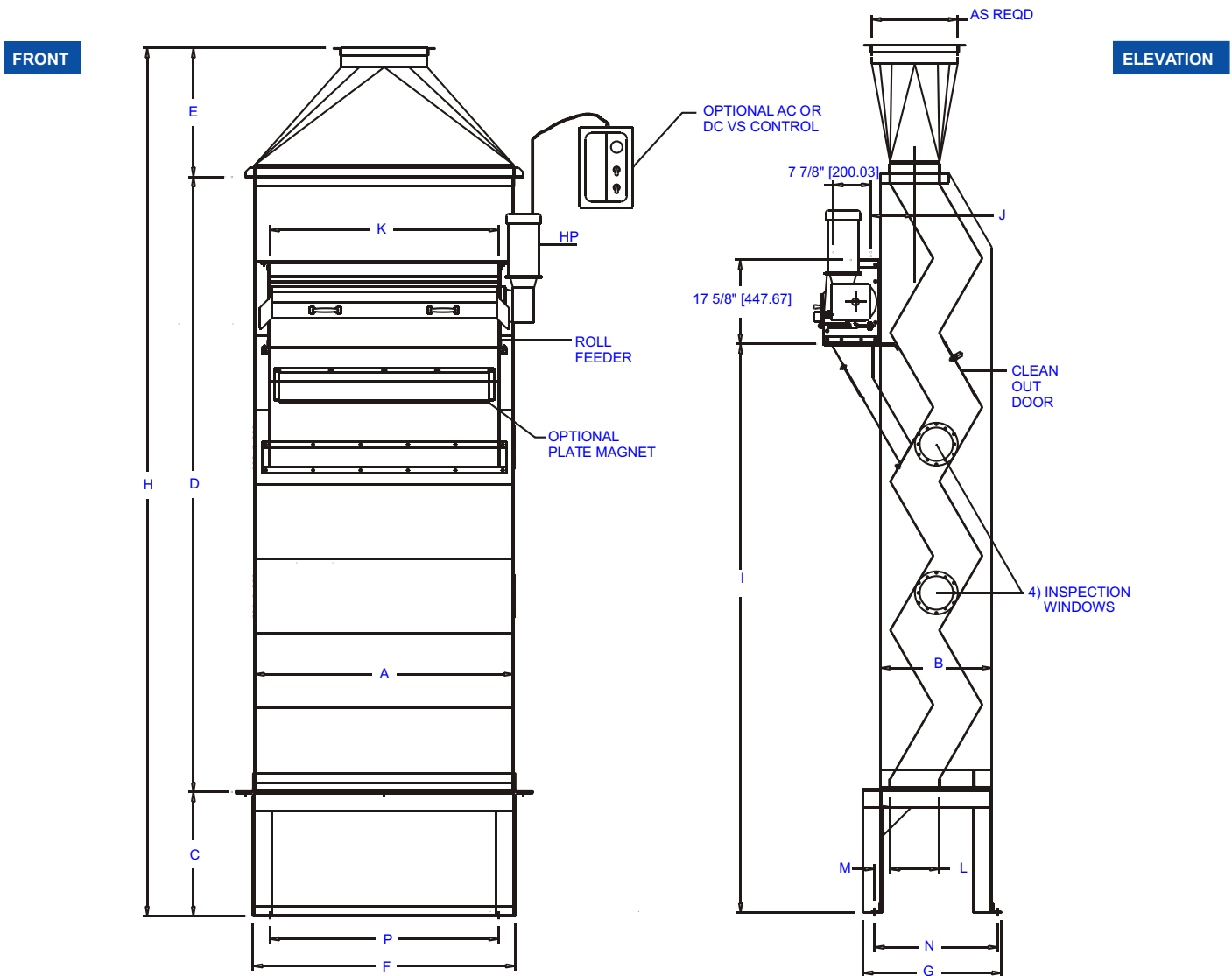
Slope of incline angles and generous product area makes the design almost impossible to choke.

Various sizes to fit your volume needs

Large oversize viewing windows make separation adjustments easy.



SPECIFICATIONS: DENSITY SEPARATOR



STD SIZES	AREA	HP	A	B	C	D	E	F	G	H
8 X 30	1.67FT ² [1.155M] ²	.75	30" [762]	23 ³ / ₈ " [593.7]	26" [660]	117 ³ / ₈ " [2981.3]	27" [685.8]	31" [787.4]	29" [736.6]	170 ³ / ₈ " [4327.5]
8 X 48	2.67FT ² [2.48M] ²	.75	48" [1220]	23 ³ / ₈ " [593.7]	26" [660]	117 ³ / ₈ " [2981.3]	27" [685.8]	49" [1244.6]	29" [736.6]	170 ³ / ₈ " [4327.5]
9 X 54	3.38FT ² [3.14M] ²	1	54" [1372]	23 ³ / ₈ " [593.7]	26" [660]	129" [3276.6]	27" [685.8]	55" [1397]	29" [736.6]	182" [4622.8]
10 X 60	4.17FT ² [3.87M] ²	1	60" [1524]	25 ¹ / ₂ " [647.7]	36" [914.4]	143" [3632.2]	36" [914.4]	61" [1549.4]	34" [863.6]	215" [5461]
12 X 60	5.0 FT ² [4.64M] ²	1	60" [1524]	29 ⁷ / ₈ " [758.8]	36" [914.4]	170 ¹ / ₄ " [4324.3]	36" [914.4]	61" [1549.4]	34" [863.6]	242 ¹ / ₄ " [4324.3]

STD SIZES	I	J	K	L	M	N	P	SHIPPING VOLUME	SHIPPING WEIGHT
8 X 30	113 ¹ / ₈ " [2873.3]	9 ³ / ₁₆ " [233.3]	24" [609.6]	9 ¹ / ₄ " [234.9]	3 ³ / ₁₆ " [80.9]	25 ⁷ / ₈ " [657.2]	24" [609.6]	88.6FT ³ [2.5M] ³	725 LBS [329Kg]
8 X 48	113 ¹ / ₈ " [2873.3]	9 ³ / ₁₆ " [233.3]	36" [914.4]	9 ¹ / ₄ " [234.9]	3 ³ / ₁₆ " [80.9]	25 ⁷ / ₈ " [657.2]	42" [1066.8]	140FT ³ [3.9M] ³	1060 LBS [481Kg]
9 X 54	119 ¹ / ₄ " [3028.9]	9 ³ / ₁₆ " [233.3]	48" [1219.2]	10 ³ / ₈ " [263.5]	3 ¹ / ₄ " [82.5]	25 ⁷ / ₈ " [657.2]	48" [1219.2]	168FT ³ [4.7M] ³	1203 LBS [545Kg]
10 X 60	130" [3302]	10 ⁵ / ₁₆ " [261.9]	48" [1219.2]	11 ⁹ / ₁₆ " [293.6]	9 ⁷ / ₁₆ " [239.7]	32 ⁷ / ₈ " [835.0]	54" [1371.6]	258FT ³ [7.3M] ³	1350 LBS [612Kg]
12 X 60	151" [3835.4]	11 ⁵ / ₈ " [295.2]	48" [1219.2]	13 ⁷ / ₈ " [352.4]	4 ³ / ₄ " [120.6]	32 ⁷ / ₈ " [835.0]	54" [1371.6]	290FT ³ [8.2M] ³	1500 LBS [680Kg]

Cottor Plants (India) Pvt. Ltd.

Certified ISO 9001:2000 Company

706, Acme Plaza, Opp. Sangam Talkies, Andheri-Kurla Road, ANDHERI (EAST), MUMBAI - 400059, (INDIA.)
 Tel: +91-22-2826 4201/2/3/4, Fax: +91-22-2834 6161, E-mail: cottor@vsnl.com, Website: www.cottor.com