



Cottor Plants (India) Pvt. Ltd.

Certified ISO 9001:2015 Company

COTTOR IS PROUD TO HAVE ENTERED INTO TECHNICAL COLLABORATION WITH



**CANTRELL
WORLDWIDE INC.**

4292 Hwy 377, Suite 25 Aubrey, TX 76227 USA
PHONE: +1-972-302-2557 FAX: +1-214-279-0855 WEB: www.cantrellworldwide.com
Email: - ayush@cantrellworldwide.com, rdb@cantrellworldwide.com

To Manufacture & Supply under licence
Latest design, High capacity,
State of art modern technology,
Excellent performance,
Cotton Seed processing machinery & parts
For Vegetable Oil industries.

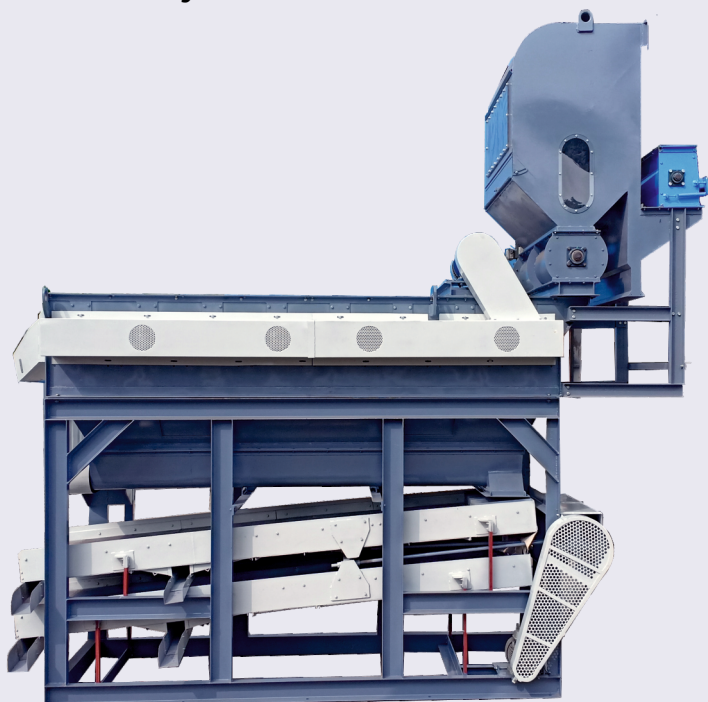
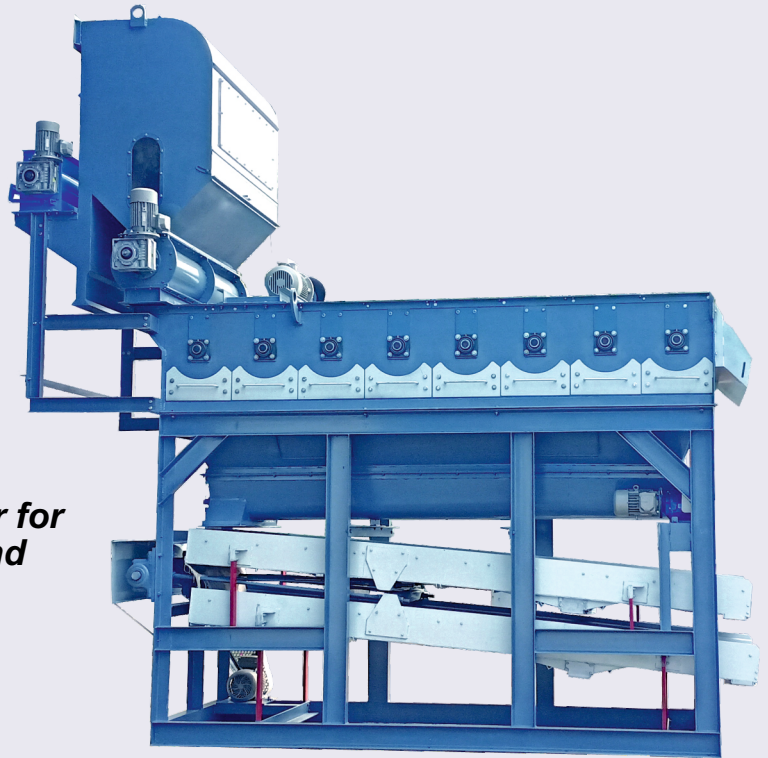
ROLL & BASKET SEED CLEANER

(MODEL - #499)

This New Innovative Development and Design of Seed Cleaner for Cottonseed is latest addition to our List of Equipments.

This Machine Consists of :

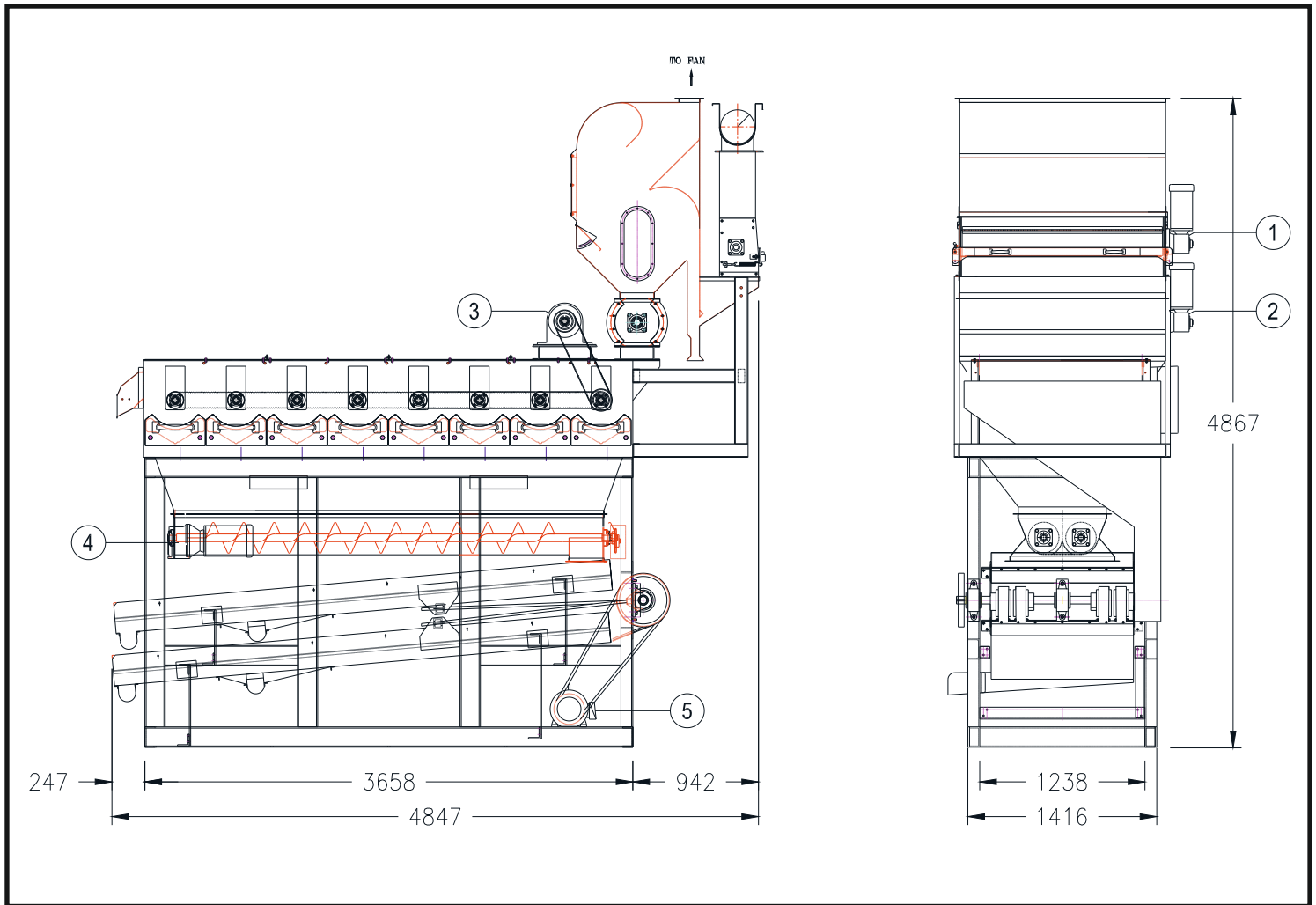
- 1.M.S.Feeder Volumetric control for uniform feeding.**
- 2.Efficient Vacuum Chamber with sealed feeder for continues feed to machine.**
- 3.Eight Roll and Basket type Seed Cleaner for better separation of Unginned Cotton and Cotton Seed.**
- 4.Twin screw Conveyer for Seed moves to Two Trays.**



- 5. Two Tray Shaker separator for Screening the Cottonseed of separating heavy dust and broken meat particles and cleaned seed discharge for further processing.**

This Seed Cleaner Machine is designed to avoid Seed Cotton Chocking Trays and Manual screen cleaning. This Machine efficiency in self separating Unginned Cotton

SPECIFICATIONS: ROLL & BASKET SEED CLEANER - #499...



This Machine is ideal, if Seed cotton is processed in roller gin plant & Unginned Cotton is more in cottonseed and separating it continuously without any manual efforts. The Raw Cottonseed Fedded to Overload Conveyor and Feeder Feed through Discharge to Air Suction Nozzle, Cleaned Seed sucked in Vacuum Chamber and through Sealed Vacuum Feeder to Seed Cleaner Machine. The stone, glass and other heavy impurities fall down through collecting Hopper. The Eight Rolls having grid basket for separating Unginned Cottonseed dropped to Twin Screw Conveyor. The Unginned Cotton collected drop to Hopper.

The Cottonseed dropped in Twin Conveyor carry to Feed Two Tray uniformly with special distribution arrangement and cottonseed is screened to separate heavy dust and meat particles collecting separately at both trays and cleaned seed discharge to conveyor for further processing.

1] FEEDER :- 1.0 HP MOTOR

2] SEALED VACUUM FEEDER :- 2.0 HP MOTOR

3] MAIN MACHINE :- 7.5 HP MOTOR

4] TWIN CONVEYOR :- 2.0 HP MOTOR

5] TWO TRAY MACHINE :- 5.0 HP MOTOR

6] FAN :- 25 HP MOTOR

Cottor Plants (India) Pvt. Ltd.

Certified ISO 9001:2015 Company

706, Acme Plaza, Opp. Sangam Talkies, Andheri-Kurla Road, ANDHERI (EAST), MUMBAI - 400059, (INDIA.)

Tel: +91-22-2826 4201/2/3/4, E-mail: cottorindia@cottor.com, Website: www.cottor.com